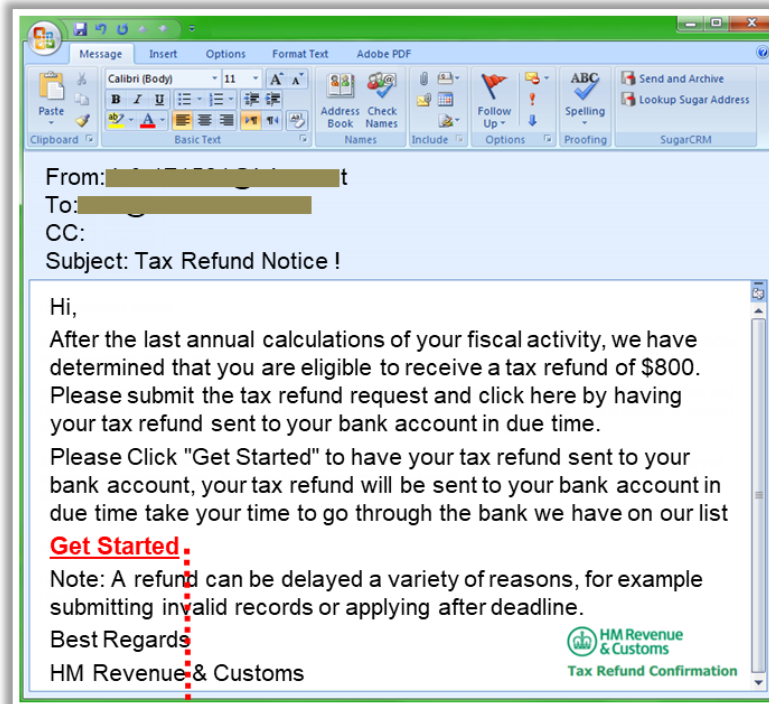


# Examples of Phishing Emails

Following are some examples of phishing emails:

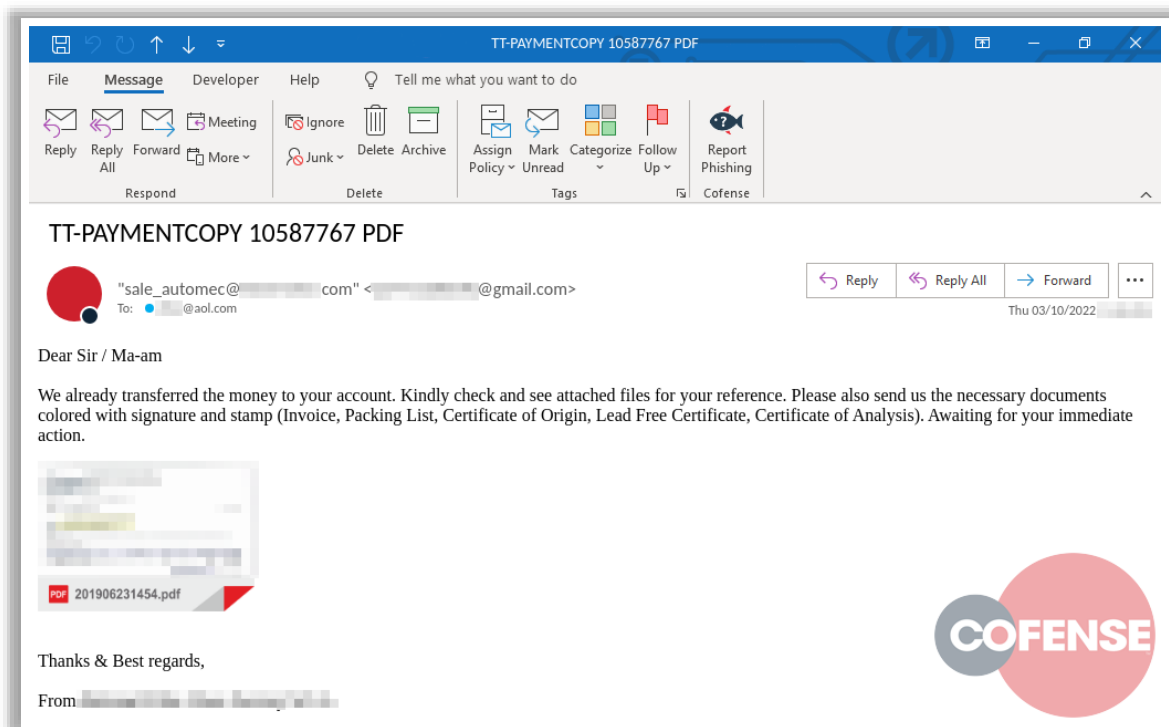
## Example 1:



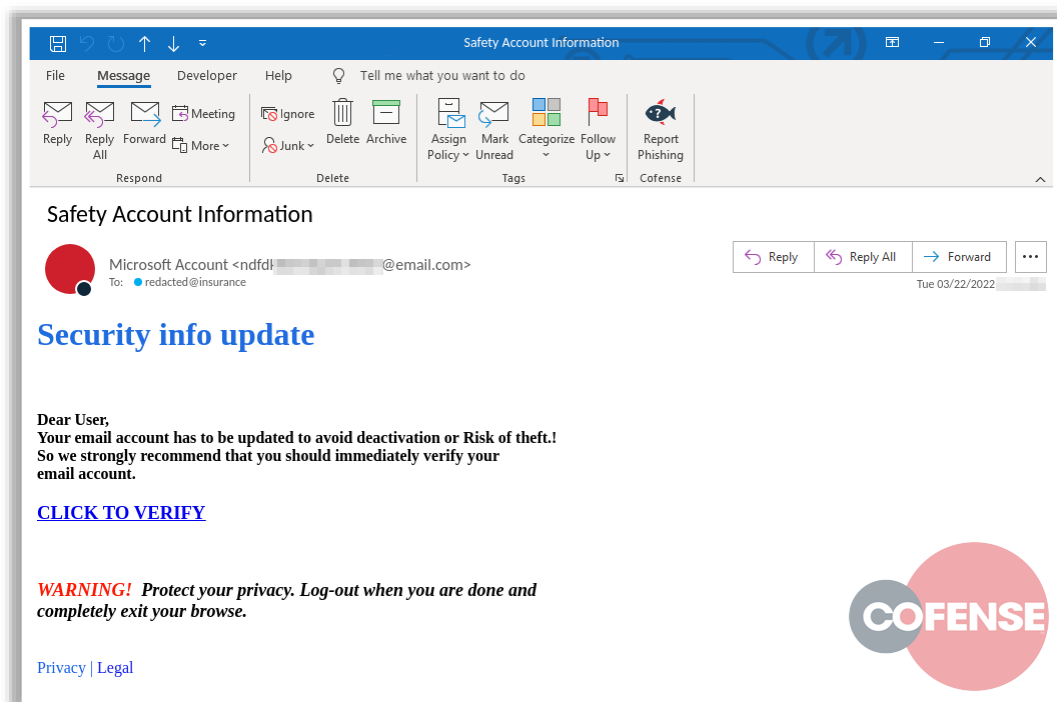
Clicking the link directs you to a fraudulent web page which looks similar to a genuine HMRC page

A screenshot of a fraudulent website designed to look like the HM Revenue & Customs (HMRC) portal. The header features the HMRC logo and navigation links: 'Home', 'Contact us', 'About us', 'Jobs', 'Accessibility', 'Feedback', and 'Help'. A search bar and a 'Tax agents & advisers' button are also present. The main content area is divided into two sections: 'Address Information' and 'Credit Card Information'. The 'Address Information' section includes fields for 'Cardholder Name', 'Date of Birth' (with dropdowns for Day, Month, and Year), 'Mother Maiden Name', 'Address', 'Town/City', 'Postal Code', and 'Phone Number'. The 'Credit Card Information' section includes fields for 'Bank Name', 'Debit / Credit Card Number', 'Expiration Date' (with dropdowns for Month and Year), 'Card Verification Number', and 'Sort Code' (with a note '(If Shown On Card)'). A 'Submit Information' button is at the bottom of the form. The footer contains 'Business Link' and various links: '© Crown Copyright', 'Terms & Conditions', 'Privacy policy', 'Site Map', 'Freedom of Information', and 'Directgov'.

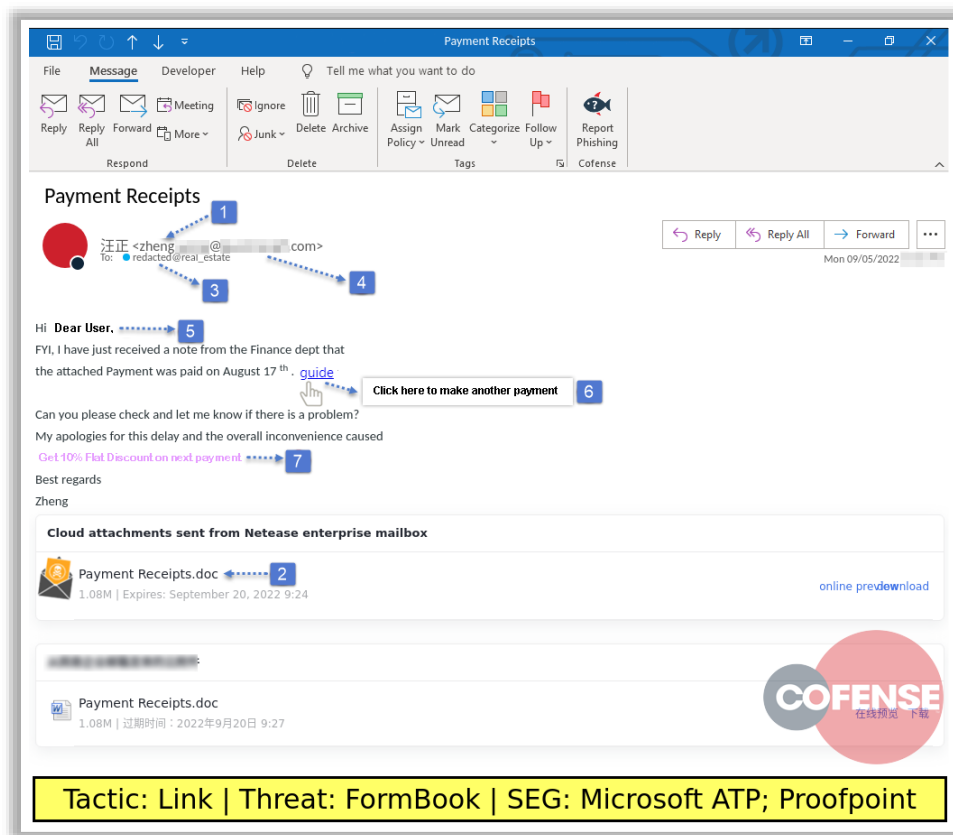
## Example 2:



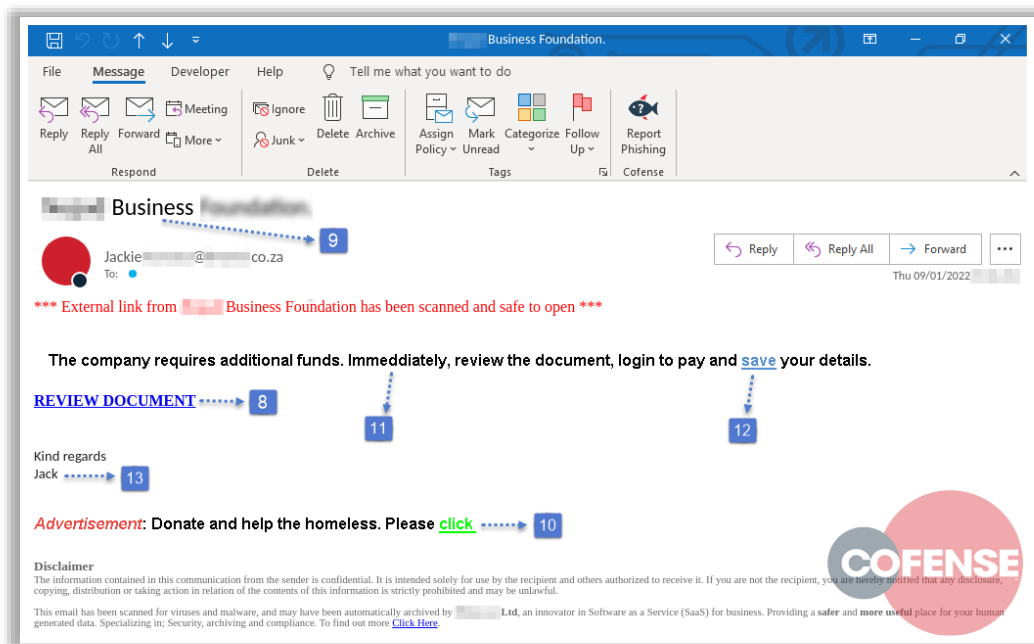
## Example 3:



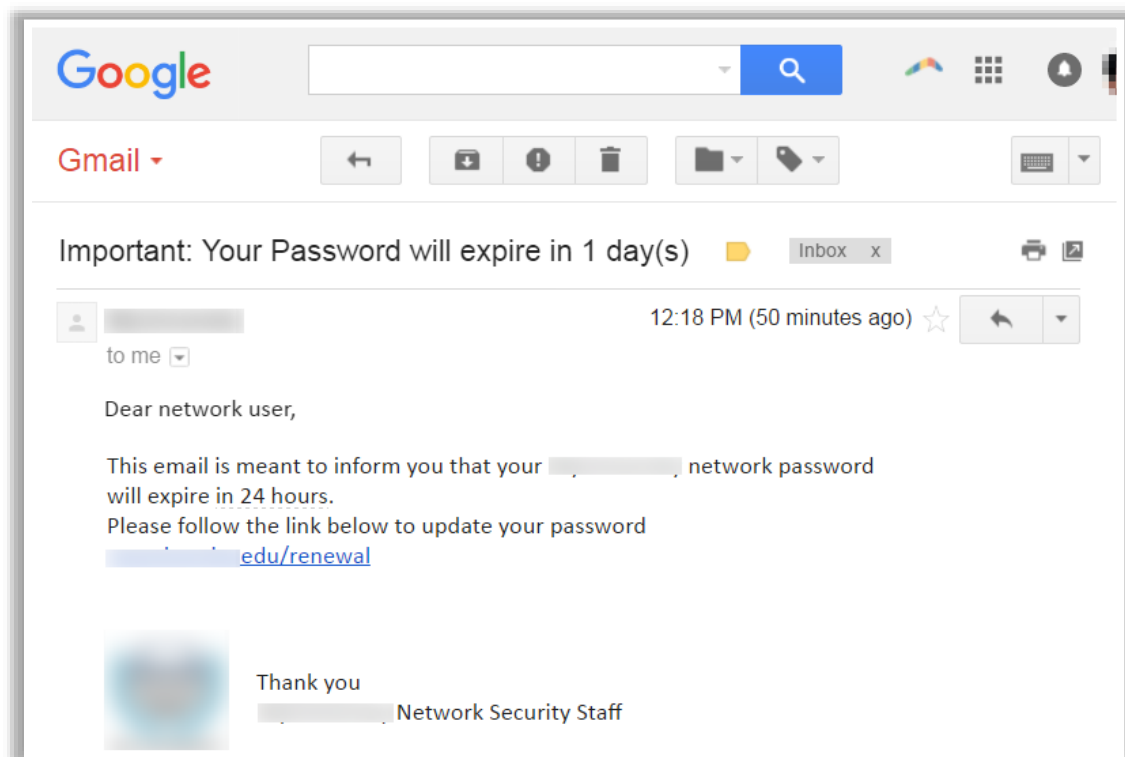
## Example 4:



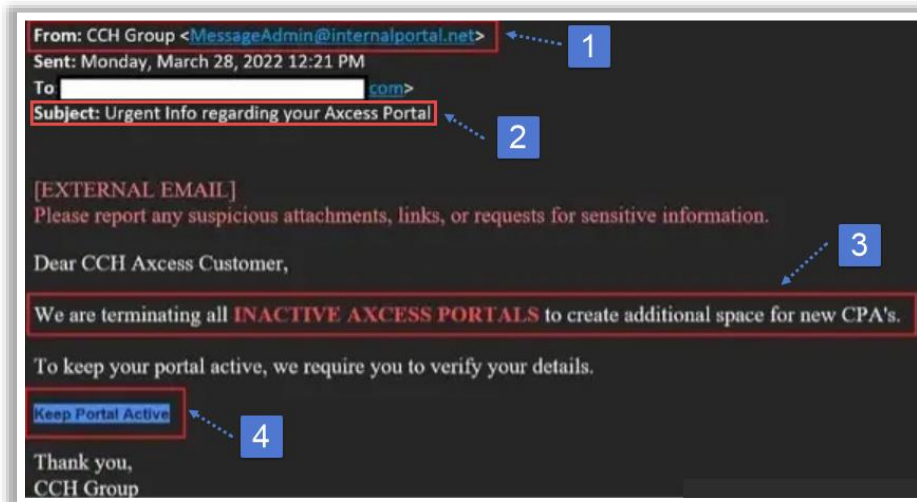
### Example 5:



### Example 6:



### Example 7:



### Example 8:

